

Sky Blue 2388

Water Soluble Floral Dye

Product Description / Intended Use

Sky Blue 2388 is a water soluble dye mixture used to color fresh flowers and foliage.



Shade Progression

Light turquoise blue at low concentrations progressing to a bright sky blue then an intense blue at higher concentrations.*



Physical & Chemical Properties

Chemical nature: water soluble dye mixture
Ionic nature: anionic
Physical Form: powder
Bulk density: 0.55 - 0.75
Solubility: excellent solubility in water, 200g/l @ 20°C
slight solubility in glycols and alcohols
Shade: Bright Blue
Light fastness: Poor
Systemic Uptake Rate: 9 (1= slow, 5=moderate, 10=fast)
Recommended pH: 2.5 - 3.5

For additional information, refer to the Technical Data Sheet for each of the component dyes in this mixture.

Storage & Handling

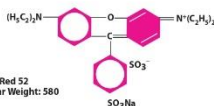
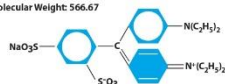
Storage: Store in a closed container in a dry environment.
Shelf Life: 6 years.
Handling: Transfer dye powder carefully to avoid creating dust.

Color Components

Component	CAS Number
C.I. Acid Blue 1	129-17-9
C.I. Acid Red 52	3844-45-9
Sodium Sulfate	7757-82-6

C.I. Acid Blue 1

Molecular Weight: 566.67



C.I. Acid Red 52

Molecular Weight: 580

Typical Use Rates

This dye can be added to water at varying concentrations to produce shades ranging in intensity from light to strong:

Light shade:	1/2 ounce/gallon	(3.7 grams/liter)
Medium shade:	1 ounce/gallon	(7.5 grams/liter)
Dark Shade:	2 ounces/gallon	(15 grams/liter)

For instructions on using this dye in floral applications please refer to technical bulletin #101 - *Dyeing Fresh Cut Flowers & Foliage with Absorption (Systemic) Dyes*.

Standard Packaging

1-lb jar 5-lb jar 25-lb pail 100-lb drum
Custom packaging available.

* Disclaimer: Color shown is a CMYK approximation only. Actual color may vary depending upon concentration and the nature of the product to which the dye is applied. One-to-one color matching is not guaranteed in all products and applications. It is essential that thorough testing be completed on a sample basis before proceeding to use this dye on a production level. To our best knowledge, the information and recommendations contained herein are accurate and reliable. However, this information and our recommendations are furnished without warranty, representation, endorsement, or license of any kind, including, but not limited to, the implied warranties of merchantability and fitness for a particular use or purpose. Customers are encouraged to conduct their own tests and to read the available product literature carefully before using the product.

Anexo 2. Ficha técnica colorante Sky Blue

Fuente. Autores, 2022